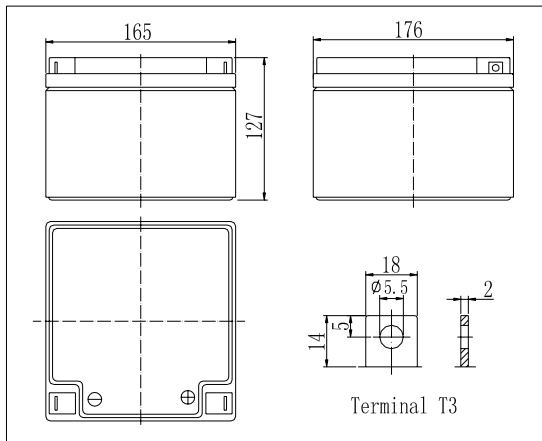


Dimensions

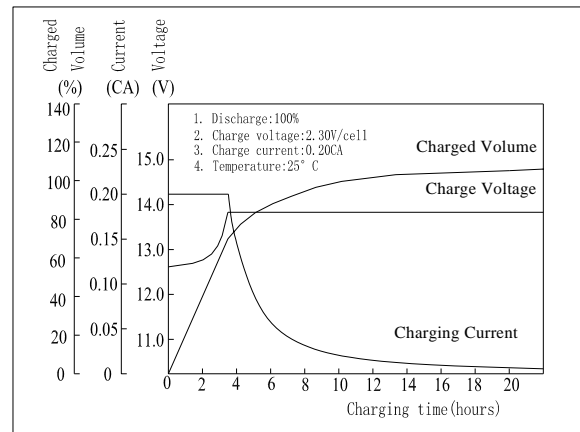


Specifications

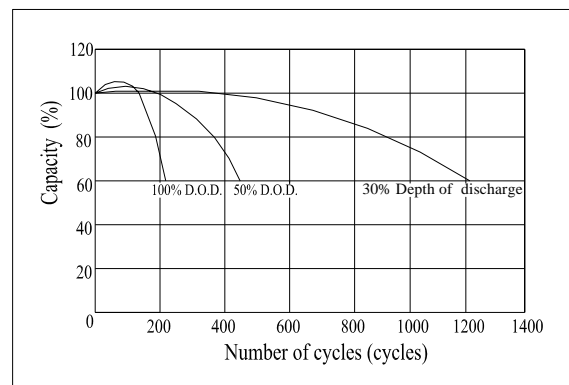
Nominal Voltage	12 V	
Capacity(20HR, 25°C)	26Ah	
Dimension	Length	165mm (6.50inch)
	Width	176mm (6.939inch)
	Height	127mm (5.0inch)
	Total Height	127mm (5.0inch)
Approx. Weight	8.4kg (18.5lbs)	
Internal resistance (Fully charged, 25°C)	Approx. 12mΩ	
Capacity affected by temperature (20HR)	40°C	102%
	25°C	100%
	0°C	85%
	-15°C	65%
Self-discharge (25°C)	3 month	Remaining Capacity: 91%
	6 month	Remaining Capacity: 82%
	12 month	Remaining Capacity: 65%
Nominal operating temperature	25°C ± 3°C (77°F ± 5°F)	
Operating temperature range	-15°C ~ 50°C (5°F ~ 122°F)	
Float charging voltage(25°C)	13.60 to 13.80V	
Cyclic charging voltage(25°C)	14.50 to 14.90V	
Maximum charging current	7.8A	
Terminal material	Copper	
Maximum discharge current	390A(5 sec.)	

- ◆ Absorbent glass mat technology;
- ◆ Recognized by UL & CE;
- ◆ ABS container.

Charging Characteristics(25°C)



Cycle Life(25°C)



Note: Floating life at 20°C designed for 5 years.

Constant Current Discharge Characteristics (A, 25°C)

F.V/TIME	5min	10min	15min	30min	60min	3h	5h	10h	20h
9.60V	92.5	62.0	46.0	27.0	16.2	6.60	4.41	2.42	1.30
10.2V	87.9	58.9	44.2	25.9	15.6	6.50	4.35	2.40	1.30
10.8V	82.6	55.4	42.0	24.6	14.8	6.37	4.26	2.37	1.28

Constant Power Discharge Characteristics (Watt, 25°C)

F.V/TIME	5min	10min	15min	30min	60min	3h	5h	10h	20h
9.60V	1032	699	524	309	188	78.4	52.6	29.0	15.6
10.2V	981	664	504	297	181	77.2	51.9	28.8	15.6
10.8V	922	625	479	282	171	75.7	50.9	28.4	15.4