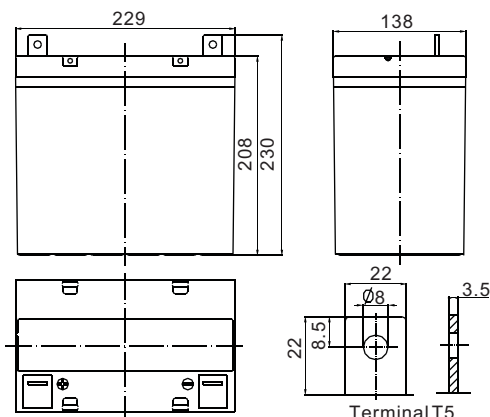


## ◆ Dimensions

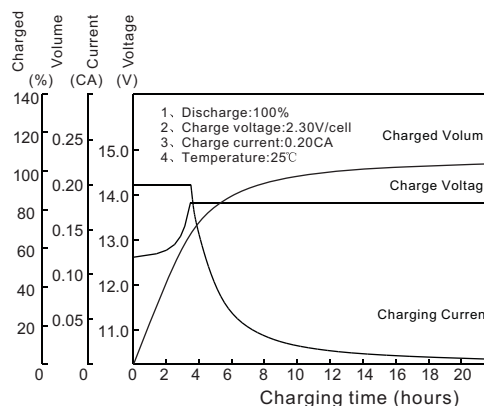


## ◆ Specifications

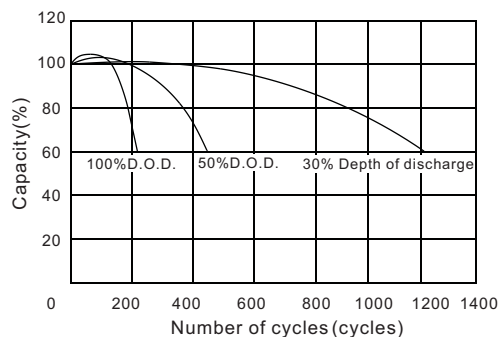
Nominal voltage		12 V
Capacity(10HR, 25°C)		55Ah
Dimension	Length	229mm (9.02inch)
	Width	138mm (5.43inch)
	Height	208mm (8.19inch)
	Total height	230mm (9.06inch)
Approx. weight		19.5kg (43.0lbs)
Internal resistance (Fully charged, 25°C)		Approx.5.8mΩ
Capacity affected by temperature (10HR)	40°C	102%
	25°C	100%
	0°C	85%
	-15°C	65%
Self-discharge (25°C)	3 month	Remaining capacity: 91%
	6 month	Remaining capacity: 82%
	12 month	Remaining capacity: 65%
Normal operating temperature		25°C ±3°C(77°F ±5°F)
Operating temperature range		-15°C ~50°C (5°F ~122°F)
Float charging voltage(25°C)		13.38 to 13.80V
Cyclic charging voltage(25°C)		14.40 to 15.00V
Maximum charging current		16.5A
Terminal material		Copper
Maximum discharge current		550A(5 sec.)

- ◆ Absorbent glass mat technology;
- ◆ Recognized by UL & CE;
- ◆ Flame retardant ABS container (UL94V-0/ 94V-2).

## ◆ Charging Characteristics(25°C)



## ◆ Cycle Life(25°C)



◆ Note: Floating life designed for 10 years at 20°C.

## Constant Current Discharge Characteristics(A,25°C)

F.V/TIME	5min	10min	15min	30min	60min	3h	5h	10h	20h
9.60V	180	130	100	62.0	36.0	14.7	10.0	5.58	2.89
10.2V	171	124	96.0	59.5	34.6	14.5	9.9	5.53	2.88
10.8V	161	116	91.2	56.5	32.8	14.2	9.7	5.50	2.85

## Constant Power Discharge Characteristics(Watt,25°C)

F.V/TIME	5min	10min	15min	30min	60min	3h	5h	10h	20h
9.60V	1890	1404	1098	696	410	173	118	66.6	34.7
10.2V	1796	1334	1054	668	394	171	117	66.0	34.6
10.8V	1688	1254	1001	634	374	167	115	65.7	34.2